

maha bhetra

"The best of both worlds"



Dear Guests,

Welcome aboard Maha Bhetra! We are delighted to have you with us and hope you feel as at home on this beautiful yacht as we have over the past 30 years of ownership. Maha Bhetra is not just a yacht to us – she holds a lifetime of memories, adventures, and stories from the stunning Andaman Sea.

One of the things that makes Maha Bhetra so special is her crew. They've been with us for decades. They are like family to us, and during your time on board, they'll make sure you feel the same way. Their extensive knowledge of the islands, secret spots, and the best fishing locations will add an extra layer of excitement and discovery to your journey.

Maha Bhetra has been crafted to offer not only luxury but also warmth and comfort, blending elegant design with the serenity of the sea. Whether it's your first voyage or one of many, we're confident this experience will be one you'll never forget.

We hope that during your stay, you feel the love and care that we've put into this yacht over the years. Thank you for choosing Maha Bhetra, and we can't wait to see the wonderful memories you create during your time with us.

Warmest regards,

The Owners of Maha Bhetra



TABLE OF CONTENTS

• Introduction	5
• Architect of Icons	8
• Award Winner	10
• Welcome Aboard Maha Bhetra	12
• Maha Bhetra	15
• Yacht history	16
• A blend of tradition and elegance	18
• A journey through time and culture	20
• Flybridge	22
• Spacious deck	24
• Saloon	26
• Staterooms	30
• Gourmet delights	32
• Maha Bhetra Specifications	34
• An invitation to the extraordinary	36
• Waters sports	38
• A gateway to unforgettable experience	40
• Events & celebrations	42
• Relaxation & wellness	43
• Maha Bhetra crew	44
• Destinations	49
• An invitation to a unique experience	66
• The Villa	68



INTRODUCTION

Maha Bhetra is a 90-foot traditional Thai-crafted motor yacht, designed by the renowned American architect Ed Tuttle, known for his work on Aman resorts. Built with a perfect blend of luxury and Southeast Asian heritage, Maha Bhetra invites you to explore the stunning Andaman Sea in absolute style. With three spacious double cabins and a wide-open teak-laden saloon, this vessel is your gateway to an immersive and unforgettable yachting experience.

After years of sailing, Maha Bhetra now graces the waters of Phuket, offering charter guests a journey that combines ancient Southeast Asian aesthetics with modern luxury. The yacht's sturdy wooden hull is designed to navigate the Andaman with ease, allowing you to venture far and wide to explore hidden coves, pristine beaches, and remote islands.



ARCHITECT OF ICONS

Ed Tuttle

Visionary Architect and Designer

Edward Burnham Tuttle Jr. (August 11, 1945 – June 21, 2020) was a globally renowned American architect and interior designer whose work redefined luxury hospitality and modern architecture. Known for his minimalist yet opulent style, Tuttle became synonymous with the seamless fusion of local culture, natural environments, and sophisticated elegance. His designs for the iconic Aman resorts, including Amanpuri in Phuket and Amanjena in Morocco, revolutionized luxury travel, setting new standards for resort architecture.

Born in Seattle, Washington, Tuttle's passion for design began early, and his studies were influenced by modernist masters such as Frank Lloyd Wright and Mies van der Rohe. After completing his education at the University of Washington, he embarked on a career that would take him around the globe, designing breathtaking hotels and private residences that have garnered international acclaim.

Tuttle founded his architectural firm, Design Realization Ltd., in Paris in 1977. There, he designed celebrated resorts and hotels, with his name forever tied to the Aman brand, where his work embodied simplicity, tranquility, and cultural sensitivity. His attention to detail and respect for natural surroundings became his signature style, making each of his projects a masterpiece in luxury living.

Among his many celebrated works is the magnificent Maha Bhetra, a classic yacht that he designed and owned. In his design for Maha Bhetra, Tuttle continued his philosophy of blending timeless beauty with modern elegance, creating an exceptional floating residence that embodies his architectural brilliance.

An exclusive fabric collection was designed by Jim Thompson for Maha Bhetra, featuring custom cushions crafted with this unique material. These refined touches, conceived by Ed Tuttle, bring a timeless elegance to the yacht and embody his commitment to luxury and artistry.



WELCOME ABOARD MAHA BETRA

A Masterpiece of Southeast Asian Craftsmanship

Welcome aboard Maha Bhetra, a 90-foot luxury traditional Thai-crafted motor yacht that epitomizes the elegance of Southeast Asian design, combined with the modern comforts you'd expect on a world-class charter. Designed by Ed Tuttle, the acclaimed architect behind Aman resorts, Maha Bhetra offers a unique charter experience that seamlessly blends ancient Thai craftsmanship with contemporary sophistication.

Originally crafted to showcase the beauty of Thailand's rich heritage, Maha Bhetra boasts a timeless charm, enhanced by a spacious open-plan teak saloon on the top deck and three palatial double cabins below. Its robust wooden hull allows for smooth sailing through the scenic waters of the Andaman Sea, making it ideal for both day trips and extended overnight charters.

After years of providing unforgettable experiences, Maha Bhetra now graces the shores of Phuket, known as the "Pearl of the Andaman." This vessel is perfect for hosting intimate gatherings of family and friends, offering a serene escape where every moment is crafted to leave a lasting impression.





MAHA BHETRA: A MASTERPIECE ON WATER

Ed Tuttle's genius is further exemplified in his work on Maha Bhetra, the 90-foot traditional Thai-crafted motor yacht. Maha Bhetra reflects Tuttle's signature style where Southeast Asian cultural elements meet modern luxury. The yacht's teak accents, spacious open-plan saloon, and exquisite Southeast Asian antiques are testaments to Tuttle's attention to detail and his ability to create spaces that are at once luxurious and culturally resonant.

Tuttle's legacy is enduring, and his work continues to inspire architects and designers around the globe. His creations are not just buildings or yachts; they are experiences that celebrate beauty, culture, and the timeless allure of luxurious simplicity.



YACHT HISTORY

Maha Bhetra was born from the vision of renowned American architect Ed Tuttle, whose designs have shaped some of the world's most luxurious retreats, including the iconic Aman resorts. Drawing inspiration from traditional Thai craftsmanship, Maha Bhetra was meticulously crafted to embody the spirit of Southeast Asia's rich maritime heritage.

With its traditional wooden hull and teak-laden saloon, Maha Bhetra stands as a unique representation of Thailand's timeless elegance. From the day of its launch, this 90-foot motor yacht has sailed the pristine waters of the Andaman Sea, offering guests a chance to explore Thailand's most beautiful and remote destinations.



A BLEND OF TRADITION AND ELEGANCE

Over the years, Maha Bhetra has become known not only for its aesthetic beauty but also for its ability to offer a seamless balance between traditional charm and modern luxury. Designed to venture far and wide, this yacht invites its guests to embark on unforgettable journeys across the crystal-clear waters of the Andaman Sea, visiting some of the region's most secluded and spectacular islands.



Today, Maha Bhetra continues to grace the waters around Phuket, offering an experience that marries the grandeur of Southeast Asian design with the comforts of contemporary yachting. Whether on a day trip to the nearby islands or an overnight adventure exploring hidden coves, Maha Bhetra remains a symbol of elegance and adventure, perfect for those seeking a truly immersive and luxurious charter experience.



A JOURNEY THROUGH TIME AND CULTURE

Step aboard Maha Bhetra, a custom motor yacht that marries Southeast Asian heritage with contemporary sophistication. Originally designed to reflect the elegance of traditional Thai culture, Maha Bhetra offers a sanctuary at sea, where guests can escape the modern world and immerse themselves in the beauty of nature. With three luxurious double cabins, Maha Bhetra accommodates up to six guests overnight, providing an intimate setting for families or friends seeking to explore the Andaman Sea.

Every voyage aboard Maha Bhetra promises the perfect blend of adventure, relaxation, and cultural immersion a unique invitation to rediscover the art of yachting.



FLYBRIDGE

The Heart of Outdoor Living

The flybridge of Maha Bhetra is an invitation to experience outdoor living at its finest. Elevated above the sea, this open-air sanctuary blends timeless Asian elegance with modern comfort. Framed by rich teakwood details and adorned with plush seating, the space is designed for both tranquil solitude and lively gatherings. Whether you are lounging in the sun, sipping cocktails at twilight, or dining beneath the stars, the flybridge offers an ever-changing backdrop of the Andaman Sea's pristine horizons.



A large alfresco dining area sets the scene for exquisite meals, where gentle sea breezes and panoramic views enhance every moment. With ample shade for daytime comfort and an intimate ambiance at night, the flybridge embodies the effortless charm of Maha Bhetra where luxury is felt in every detail, and every sunset becomes an unforgettable spectacle.



SPACIOUS DECKS : Designed for Leisure and Luxury

The open-plan teak-laden saloon on the upper deck is where Maha Bhetra's charm comes to life. This beautifully designed space combines traditional accents with modern comfort, offering panoramic views of the ocean. With ample seating and wide-open spaces, this is the perfect spot to relax, enjoy a meal, or take in the beauty of the Andaman Sea.



Guests can enjoy the warm sun on comfortable loungers or retreat to shaded nooks to cool off with a refreshing drink. The seamless flow between indoor and outdoor spaces encourages spontaneous gatherings, from sunset cocktails to quiet moments of reflection. Every corner of the deck is crafted to enhance the yachting experience, offering an ideal blend of openness and intimacy that allows guests to fully immerse themselves in the serene beauty of the sea.



The outdoor area invites guests to enjoy al fresco dining, sun-soaked afternoons, or tranquil evenings under the stars. Whether you're savoring a delicious Thai meal or simply soaking in the ocean breeze, the upper deck is where luxury meets relaxation.



SALON

A Space of Timeless Refinement

Step into the heart of Maha Bhethra's interior, where traditional Southeast Asian design meets modern luxury. The yacht's salon is a serene, open-plan space that seamlessly connects with the exterior, allowing the ocean breeze and natural light to flow through the room. Expansive windows offer panoramic views of the Andaman Sea, enhancing the feeling of openness and connection to the surrounding environment.



The décor perfectly blends classic and contemporary elements, with teak accents and 18th-century Southeast Asian antiques creating an atmosphere of understated elegance. The salon also features comfortable, plush seating and a refined dining area, ideal for intimate meals or casual gatherings.



Custom-designed louvered cabinets discreetly house modern amenities, including a selection of board games for guests to enjoy, adding a playful touch to the space. Whether you're relaxing with a book, enjoying conversation, or taking in the stunning views, Maha Bhethra's salon is a perfect fusion of luxury, comfort, and natural beauty.



Built with tropical breezes in mind, the salon opens effortlessly onto the aft deck, creating a seamless flow between indoor elegance and outdoor charm. Handwoven textures, warm teak finishes, and curated art pieces further elevate the atmosphere, making every moment aboard feel both grounded and extraordinary.



STATEROOMS:

A Private Sanctuary

Maha Bhetra boasts three palatial double cabins, each offering a serene escape for guests. With a neutral color palette and Southeast Asian antiques adorning the interiors, the cabins are both luxurious and inviting. Each cabin features en suite facilities, ensuring privacy and comfort throughout your stay.



Designed with bespoke louvered cabinetry and Southeast Asian décor, exudes timeless elegance. Guests can unwind in the plush surroundings, enjoying the perfect blend of traditional and contemporary design.

STATEROOMS

3 identical cabins of 20 sqm

- Full Air conditioned
- Compartmentalized WC (135 cm x 110 cm)
- Compartmentalized Shower (135 cm x 110 cm)
- Basin with vanity
- 2 individual wardrobes incorporated within dressing area
- 2 beds (140 cm x 200 cm)



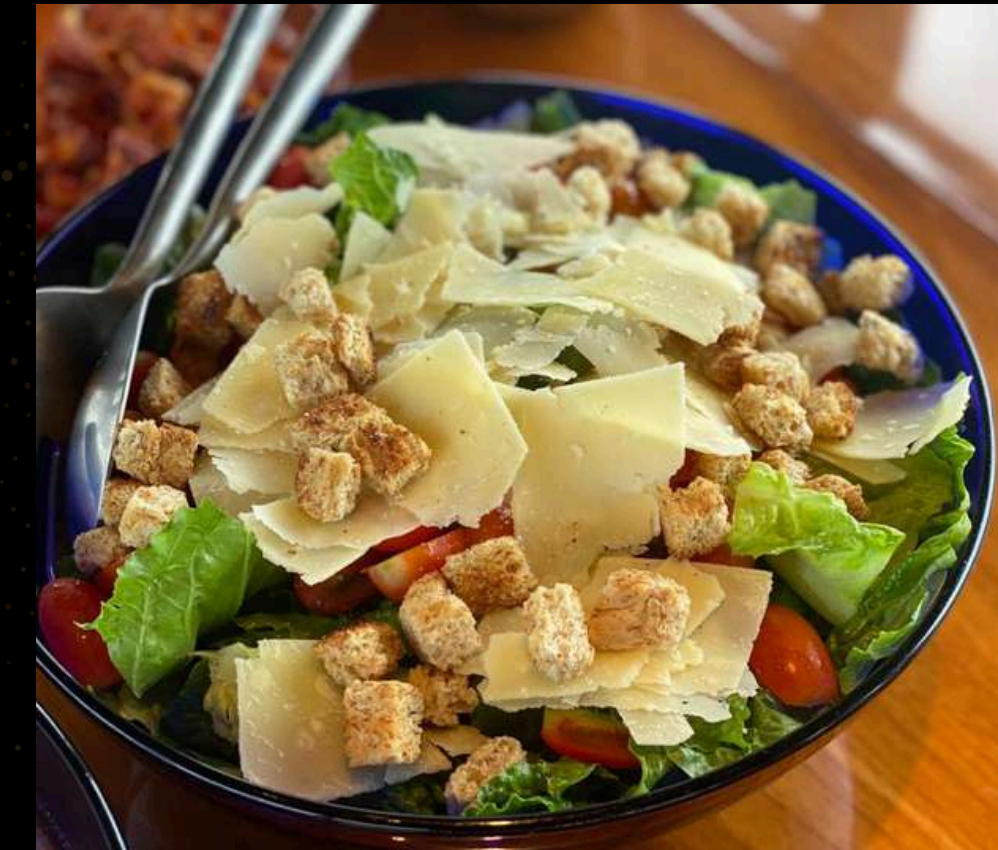
GOURMET DELIGHTS

A Culinary Odyssey

Dining aboard Maha Bhetra is a culinary adventure that reflects the rich flavors of Thailand while offering a sophisticated, world-class dining experience. Every meal is crafted using the freshest local ingredients, ensuring an authentic and memorable feast at sea. Guests can enjoy traditional Thai dishes, as well as a selection of international gourmet options, tailored to their preferences.

Whether it's a continental breakfast to start the day, a seafood BBQ as the sun sets, or a fine dining experience under the stars, each meal is a celebration of flavor and artistry. The yacht's open-air dining areas, including the spacious teak deck and the cozy aft lounge, provide the perfect backdrop for enjoying meals in the stunning surroundings of the Andaman Sea.

Paired with a selection of fine wines, local spirits, and exotic Thai beverages, dining aboard Maha Bhetra is designed to elevate your charter experience, combining exceptional cuisine with the beauty of Southeast Asia's seascape.



MAHA BHETRA

Designed by American Ed Tuttle, Maha Bhetra is a unique 90ft Thai-crafted wooden hull motor yacht that features three palatial double cabins below a spacious open-plan teak-laden saloon on the top deck. Its sturdy construction will take its guests far and wide in the Andaman.



LOA
27.4 METERS



BEAM
5.70 METERS



DRAFT
2.50 METERS



CABIN
3 DOUBLES



CREW
5 PERSONS

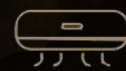


GUESTS
12 DAY TRIP
6 OVERNIGHT



SPEED
8 KNOTS

FEATURES



AIR CONDITIONING



BBQ / GRILL



WIFI



BLUETOOTH
SPEAKERS



BOARD GAMES



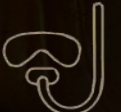
FISHING
EQUIPMENT



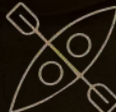
TENDER



BEACH GAME



SNORKELING
EQUIPMENT



KAYAKS



PADDLE BOARD



SAFETY
EQUIPMENT



LIFE JACKETS



MEDICAL
EQUIPMENT



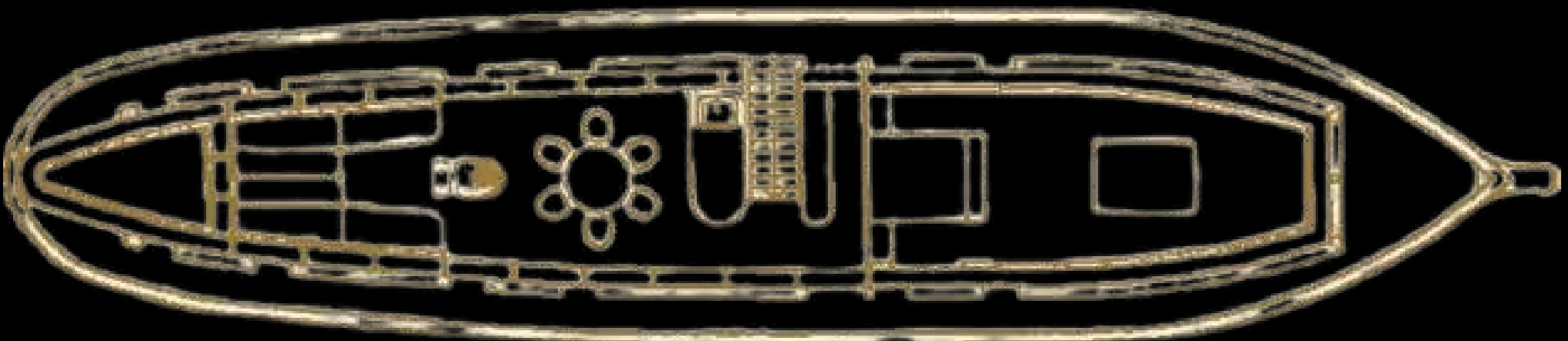
MAHA BHETRA

DECK PLAN

MIDDLE



TOP



27 m

AN INVITATION TO THE EXTRAORDINARY

Sailing aboard Maha Bhetra is not just a journey it's an immersion into a world where time slows down, and every moment is filled with elegance, serenity, and adventure. Whether you are discovering the hidden gems of the Andaman Sea, diving into vibrant coral reefs, or simply lounging on the teak deck with a cocktail as the sun sets, Maha Bhetra offers an experience that transcends the ordinary.

We invite you to step aboard Maha Bhetra and experience the art of Southeast Asian yachting, reimagined for the modern explorer. Let Maha Bhetra be your private sanctuary on the water, where each detail is thoughtfully curated to create lasting memories of your time at sea.



WATER SPORTS

Explore with Elegance

For those seeking adventure, Maha Bhetra is equipped with an array of water sports and exploration equipment. Guests can enjoy kayaking, paddleboarding, snorkeling, or fishing all while taking in the pristine beauty of Southeast Asia's waters.

Maha Bhetra's tender offers easy access to secluded beaches and hidden coves, providing a gateway to explore the Andaman's untouched natural wonders.



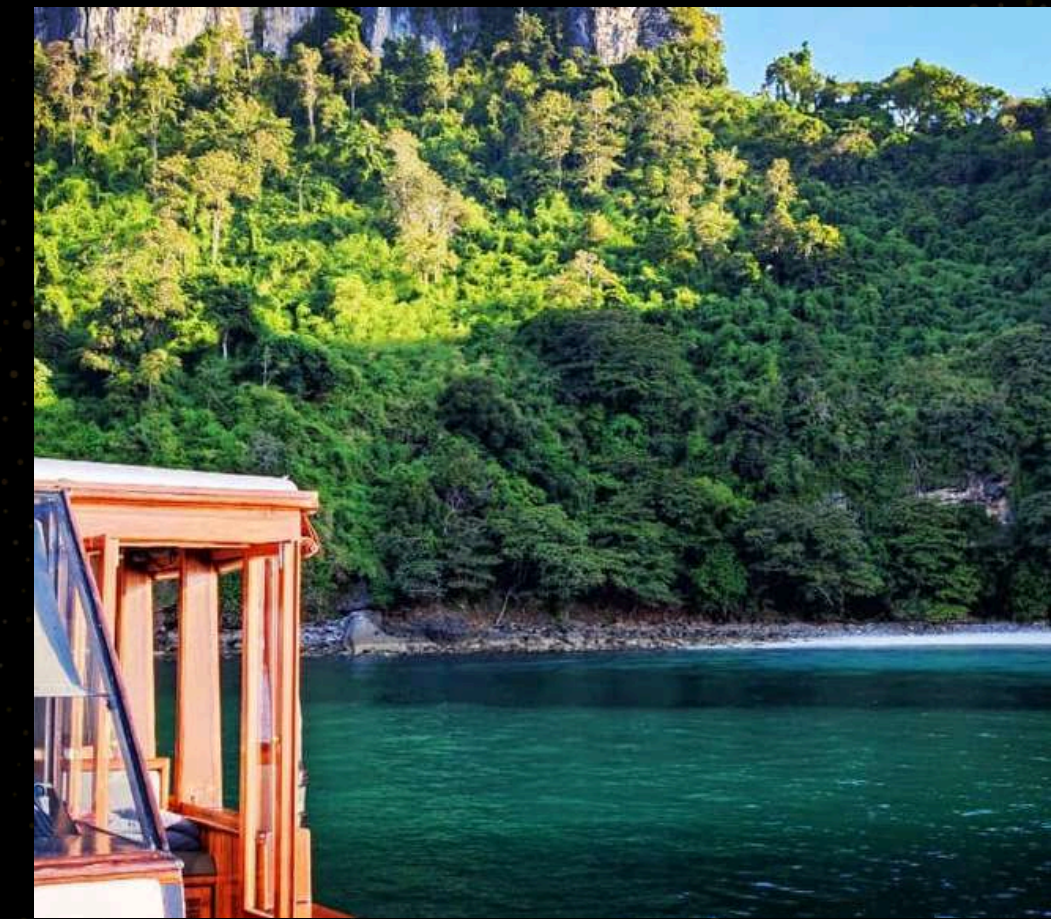


A GATEWAY TO UNFORGETTABLE EXPERIENCES

A voyage aboard Maha Bhetra is more than just a journey; it's an invitation to explore the wonders of the Andaman Sea, where each day brings new adventures and discoveries. Dive into crystal-clear waters for an afternoon of snorkeling, uncovering vibrant coral reefs teeming with marine life, or enjoy a peaceful paddleboarding session as you glide across calm seas with breathtaking panoramic views.

For those with an adventurous spirit, kayaking along secluded shorelines offers the chance to explore hidden coves and untouched beaches, while fishing in some of the region's most abundant waters provides an exciting opportunity to reel in a prized catch. If relaxation is more your style, unwind on deck, letting the gentle ocean breeze and rhythmic waves bring a sense of calm and rejuvenation.

From exhilarating water sports to serene moments of connection with nature, Maha Bhetra offers a wide range of experiences to suit every guest's interests, ensuring that your time onboard is as thrilling or as tranquil as you desire.



EVENTS & CELEBRATIONS

Maha Bhetra is more than just a yacht it's the perfect venue for your special moments at sea. Whether you're planning a family celebration, a private gathering with friends, or a memorable occasion, our team ensures that every event is tailored to your vision. Picture an intimate dinner under the stars, a sunset cocktail reception, or a milestone celebration, all set against the backdrop of the Andaman Sea.



RELAXATION & WELLNESS

Escape the stresses of daily life and find complete relaxation aboard Maha Bhetra. While onboard, you have the option to arrange wellness services such as soothing massages and revitalizing treatments through our network of highly skilled therapists. We collaborate with some of the best therapists in the region to ensure your experience is as personalized and rejuvenating as possible.

Whether you prefer a tranquil massage on deck, the privacy of your cabin, or a serene setting while anchored near a secluded beach, we can arrange wellness treatments that will leave you feeling refreshed and restored.



We work closely with you to bring your ideas to life, making sure every detail is perfect whether it's a relaxed gathering or a once-in-a-lifetime event. Aboard Maha Bhetra, you'll experience moments that are as meaningful as they are effortless. With elegant surroundings and a dedicated crew to attend to your every need, your time aboard will be unforgettable.





MAHA BHETRA CREW

The Maha Bhetra crew feels like family to the owners, and they extend this warmth and care to every guest. With over two decades of experience together, they exemplify the finest Thai friendship and hospitality, doing everything possible to ensure that guests have an unforgettable experience. Their knowledge of the Andaman Sea, its islands, hidden spots, and fishing opportunities is unparalleled. Not only do they know every island and secret fishing location, but they also share a passion for fishing, ensuring an exciting and immersive journey for their guests.

The crew’s extensive experience, personal warmth, and deep love for the Andaman Sea guarantee that every guest enjoys not just luxury but also adventure, camaraderie, and the joy of discovery during their time aboard Maha Bhetra.



KHUN LIM – CAPTAIN

With 30 years of marine experience and 15 years aboard Maha Bhetra, Captain Lim is the guiding force behind every voyage. His vast knowledge of the Andaman Sea’s islands and secret spots ensures guests always have a unique and tailored experience. Lim is passionate about creating unforgettable yachting adventures, and his love for fishing adds an extra dimension to the trips, whether guests are seasoned anglers or beginners.



KHUN DAM – STEWARD

Having served on Maha Bhetra for nearly 30 years, Khun Dam’s hospitality is as deep as his knowledge of the region. With a talent for fine dining and creating memorable experiences, he ensures that every guest feels at home. Dam loves the sea as much as the guests do and is always eager to share his fishing knowledge, making sure guests have a relaxing and enjoyable time on board.



KHUN LEN – ENGINEER

With nearly 25 years on board, Khun Len is the heart of the yacht’s technical operation, ensuring everything runs smoothly. His passion for the sea and fishing makes him a trusted and knowledgeable companion for any water activities. Guests often feel at ease knowing Len’s kind presence is always there, ready to assist with anything, especially when exploring new fishing spots.

*The crew introduced in this brochure reflects the team onboard at the time of publication. Crew compositions may be subject to changes. Please verify the current crew list with your charter agent prior to departure.

DESTINATIONS





THAILAND DESTINATIONS

Thailand, an enchanting destination for year-round sailing, is a land where vibrant culture meets serene natural beauty. Comprising hundreds of islands and bordered by the Andaman Sea and the Gulf of Thailand, this Southeast Asian gem offers a unique blend of bustling cities, tranquil islands, and breathtaking coastlines. With a population of nearly 70 million, Thailand is known for its warm hospitality, rich history, and diverse landscapes.

Sailing in Thailand provides an exceptional experience, from the stunning limestone cliffs of Phang Nga Bay to the crystal-clear waters of the Similan Islands.

Tailored voyages in Thailand promise a personalized and unforgettable journey, crafted by our expert team to suit every need. From arranging seamless transportation and VIP services to creating bespoke itineraries, every detail is carefully considered to ensure a flawless experience. Whether you're sailing through turquoise waters, exploring lush jungles, or enjoying the vibrant nightlife, Thailand offers a journey of discovery and wonder at every turn.





PHUKET & SURROUNDINGS

Often cited amongst the world's finest beach destinations, Phuket is a paradise of fine white sand, nodding palm trees and lively towns. Blessed with more than 30 amazing beaches, Phuket has something to offer for all tastes and budgets.

From day trips to overnight cruises the region truly has it all. From Phang Nga Bay to Koh Tapu, made famous as the setting for *The Man with the Golden Gun*, the area is characterized by vertical limestone karsts, majestic rock formations, mangroves, small desert islands and coral reefs.

The coastline of Krabi, east of Phuket, features hundreds of uninhabited islands, featuring stunning corals and intricate cave systems. Further south the Racha Islands are an excellent destination for diving, snorkeling and fishing. The list is end- less and we know them all!





PHANG NGA BAY & KRABI

Phang-nga Bay is the so-called James Bond Island, a needle formed limestone rock in the sea, which featured in the movie 'The Man with the Golden Gun'. Krabi Islands The coastline of Krabi, east of Phuket, features hundreds of islands, mostly uninhabited, and a lure for visitors with their white-sand beaches, coral reefs, and intricate cave systems.

The Krabi Islands are south of Phang Nga Bay and north of the Phi Phi Islands, yet quieter than both while still offering picturesque landscapes and clear waters, ideal for snorkeling. Northwest of Ao Nang is the small but beautiful 'Hong Islands', which has spectacular beaches and hidden lagoons with shoals of colorful fish that literally eat out of your hand.

Chicken Island (Koh Gai), named after the island's distinctive rock formation, has steep cliffs at one end, while the other end features beautiful beaches along a peninsula that becomes a small island at high tide. Just 8km from Ao Nang, Koh Poda is a small island about 1km across, covered in palm trees and almost entirely circled by a soft white-sand beach, with a coral reef home to a variety of sea life.





PHI PHI ISLANDS

Known as ‘the jewels of the Andaman Sea’ are considered one of the most naturally beautiful places in the world and it’s easy to see why. Sheer cliffs rise out from the sea on your approach only to give way to beach-fronted jungle.

The Phi Phi Islands, located in the Andaman Sea, are an iconic group of islands that captivate visitors with their natural beauty. The archipelago consists of six islands, with Koh Phi Phi Don and Koh Phi Phi Leh being the most well-known.

Koh Phi Phi Don is the largest and only inhabited island, characterized by lush greenery, towering limestone cliffs, and sparkling azure waters. The island is a vibrant blend of picturesque beaches and dramatic rock formations that create a unique tropical landscape.

Koh Phi Phi Leh, on the other han, is a smaller, uninhabited island famous for its crystal-clear waters and striking cliffs. The island is a serene escape, with its pristine natural beauty offering a sense of tranquility and wonder. Together, the Phi Phi Islands offer an unparalleled visual experience, making them one of the most spectacular destinations in Southeast Asia.





RACHA ISLANDS

The Racha or Raya Islands are known as among the best diving, snorkeling and fishing destinations in Thailand.

Koh Racha Noi offers some truly spectacular dive sites with giant underwater boulders, great visibility and stunning scenery. There is deep water around the island, so you often see large pelagic visitors such as barracudas, eagle rays, marbled stingrays and even manta rays.

Racha Yai is a beautiful tropical island and a dive paradise featuring hard coral reefs, colourful shallow water coral gardens, and even a number of small wrecks making this island a favourite destination for everyone.





KOH LIPE & BUTANG ARCHIPELAGO

This small L-shaped island, in the South Thailand's Satun Province is situated on the outskirts of the Tarutao National Marine Park. Originally only inhabited by Sea Gypsies, the Chao Ley, who named the island Koh Lipe, the island and its surroundings are a haven for snorkeling and diving.

Its coral reefs are easily accessible from the islands four main beaches. With a colourful history and gorgeous white beaches Koh Lipe is slightly off the beaten track and a wonder to behold.





MU KO SIMILAN MARINE PARK

he exquisite Similan Islands with their tropical jungle beauty, white sand beaches and turquoise waters are widely considered amongst Thailand's most popular dive destinations.

The National Marine Park is abundant in gorgeous coral reefs peppered with rainbow colored fish as well as deep water boulder formations that attract large pelagic fish such as whale sharks and manta rays.

The distinctive granite boulder formations on the surface continue underwater creating dramatic underwater seascapes. Most people travel to the Similans for the snorkeling or scuba diving but there are also opportunities to enjoy bird watching and jungle walks.





SURIN ISLANDS

The Surin Islands offer a secluded paradise of untouched natural beauty, celebrated for their lush tropical forests, pristine white sand beaches, and vibrant turquoise waters. These islands, part of a protected national park, are a haven for marine life and are especially renowned for their coral reefs, teeming with an array of colorful fish and diverse underwater flora.

With their shallow reef areas, the Surin Islands are ideal for snorkeling, offering close encounters with species like parrotfish, angelfish, and even sea turtles. For those venturing deeper, divers can explore the unique underwater landscapes, including expansive coral gardens and hidden crevices where reef sharks and other pelagic species may be spotted.

Beyond the water, the islands also feature opportunities for jungle trekking, allowing visitors to discover the rich biodiversity of the island's rainforest, home to exotic birds, monitor lizards, and other wildlife.





ANAMBAS ISLANDS

The Anambas Islands are a secluded archipelago located in the South China Sea, part of Indonesia's Riau Islands province. Known for their breathtaking natural beauty, these islands are celebrated for their turquoise waters, pristine white-sand beaches, and lush greenery, making them a sought-after destination for nature lovers and yacht charters alike.

Comprised of over 200 islands, the Anambas are home to vibrant coral reefs teeming with marine life, attracting divers and snorkelers from around the world. The region's biodiversity offers a rich underwater experience, with sightings of sea turtles, colorful fish, and occasional reef sharks. Some of the most popular dive sites include Tokong Malangbiru and the wreck of the Seven Skies, a submerged oil rig.

The islands also boast tranquil lagoons and uninhabited beaches, perfect for relaxation and exploration. Remote locations such as Bawah Island offer luxury eco-resorts, while smaller fishing villages provide a glimpse into the local culture, where life is slow-paced, and traditional wooden boats dot the coastline.





MERGUI ARCHIPELAGO

Scattered like pearls on a blue velvet bed sheet are a bunch of 800 islands scattered over the Andaman sea just off the eastern coast of Myanmar. This is Burma's tropical paradise of Mergui Archipelago. The British colonial name of "Mergui" still remains as opposed to the Burmese "Myeik". Myanmar has got turquoise waters, palm-fringed white sand beaches, amazing dive sites, rich wildlife, mangrove forest, but despite the fact that there are only a few islands in Thailand, comparatively, Mergui Archipelago, is far less famous than its Andaman Sea neighbor, the surin and similan islands.

In fact, Myeik Archipelago is one of the world's best-kept secrets due to the fact that it was only opened to tourism in 1997 and is still under quite a strict regulation.



AN INVITATION TO A UNIQUE EXPERIENCE

Sailing aboard Maha Bhethra isn't just a voyage; it's an invitation to immerse yourself in a world of elegance and relaxation. Whether you're discovering the pristine coves of the Andaman Sea, indulging in water sports in calm, crystal-clear waters, or savoring breathtaking sunsets from the deck, Maha Bhethra elevates every moment into a cherished memory.

With its timeless design and modern amenities, Maha Bhethra offers more than a luxurious escape it provides a sanctuary at sea where each detail is crafted to ensure a truly exceptional experience. Step aboard and let the charm of the ocean create unforgettable memories for you and your loved ones.



maha bhetra



"The best of both worlds"

Disclaimer:

Crew, food, activities, water toys, and destinations are subject to change based on availability, seasonality, and external factors such as access restrictions (e.g., national parks). Guests are encouraged to verify details prior to booking. All changes will be communicated as necessary, but availability cannot be guaranteed at the time of booking.